



TACOMA CENTRE

Small Office Suite Solutions

TACOMACENTRE.COM



SMALL OFFICE SUITE SOLUTIONS



Tacoma Centre offers private office space with best-in-class amenities and flexible lease terms. The 6th floor features turnkey suites for solo professionals and teams of 2 to 10, along with a dedicated conference room and tenant lounge.

If you or your company needs to rent a small office or a flexible executive suite that's move-in ready, Tacoma Centre offers thoughtfully designed suites with best-in-class amenities and technology.

SMALL OFFICE SUITES INCLUDE:

Internet

Utilities

Conference Rooms

Tenant Lounge/Kitchenette

WILL FRAME

Executive Vice President
253.722.1412 | will.frame@kidder.com

DREW FRAME, SIOR

Senior Vice President
253.722.1433 | drew.frame@kidder.com

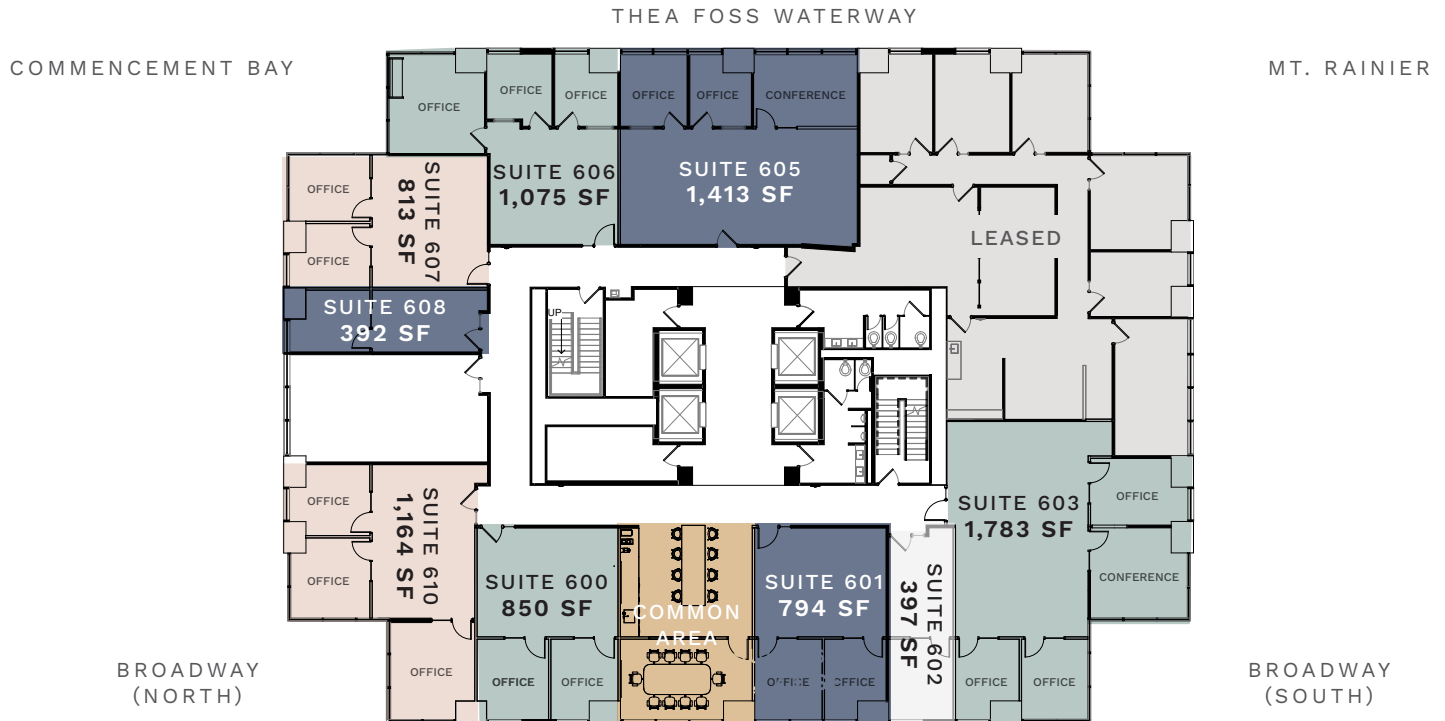


TACOMACENTRE.COM

This information supplied herein is from sources we deem reliable. It is provided without any representation, warranty, or guarantee, expressed or implied as to its accuracy. Prospective Buyer or Tenant should conduct an independent investigation and verification of all matters deemed to be material, including, but not limited to, statements of income and expenses. Consult your attorney, accountant, or other professional advisor.



6TH FLOOR SPEC SUITES



SUITE 600 | 850 SF

\$37.00 PSF, Full Service
2 Private Offices

SUITE 601 | 794 SF

\$37.00 PSF, Full Service
2 Private Offices

SUITE 602 | 397 SF

\$37.00 PSF, Full Service
1 Private Office

SUITE 603 | 1,783 SF

\$37.00 PSF, Full Service
2 Private Offices, 1 Conference

SUITE 605 | 1,413 SF

\$37.00 PSF, Full Service
2 Private Offices, 1 Conference

SUITE 606 | 1,075 SF

\$37.00 PSF, Full Service
3 Private Offices, 1 Conference

SUITE 607 | 813 SF

\$37.00 PSF, Full Service
2 Private Offices, 1 Conference

SUITE 608 | 392 SF

\$37.00 PSF, Full Service
1 Private Office

SUITE 610 | 1,164 SF

\$37.00 PSF, Full Service
2 Private Offices, 1 Conference

WILL FRAME

Executive Vice President
253.722.1412 | will.frame@kidder.com

DREW FRAME, SIOR

Senior Vice President
253.722.1433 | drew.frame@kidder.com





TAKE ON TACOMA

Located on the most vibrant street in Downtown Tacoma, Tacoma Centre provides you with access to renowned restaurants, bars, gyms, parking, and retailers within steps of the front door.

Access to Tacoma Centre is unparalleled with immediate access to I 705, I-5, West Tacoma, and North Tacoma.



WALKSCORE —
WALKER'S
PARADISE



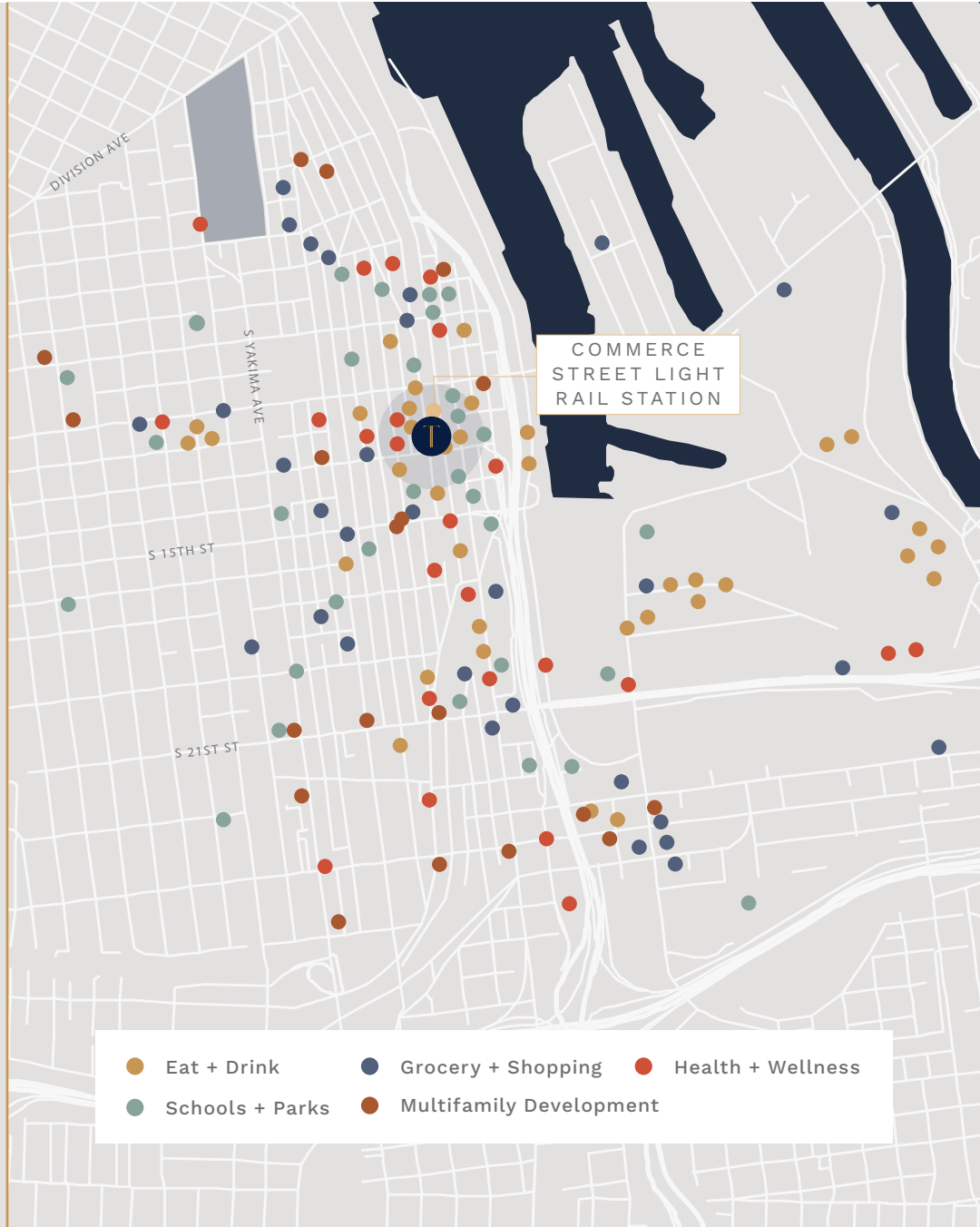
ABUNDANT
PARKING WITHIN
WALKING
DISTANCE



1 BLOCK TO
COMMERCE
STREET LIGHT
RAIL STATION



ACROSS THE
STREET FROM
THE LUXURIOUS
HOTEL MURANO



WILL FRAME

Executive Vice President
253.722.1412 | will.frame@kidder.com

DREW FRAME, SIOR

Senior Vice President
253.722.1433 | drew.frame@kidder.com



TACOMACENTRE.COM

This information supplied herein is from sources we deem reliable. It is provided without any representation, warranty, or guarantee, expressed or implied as to its accuracy. Prospective Buyer or Tenant should conduct an independent investigation and verification of all matters deemed to be material, including, but not limited to, statements of income and expenses. Consult your attorney, accountant, or other professional advisor.